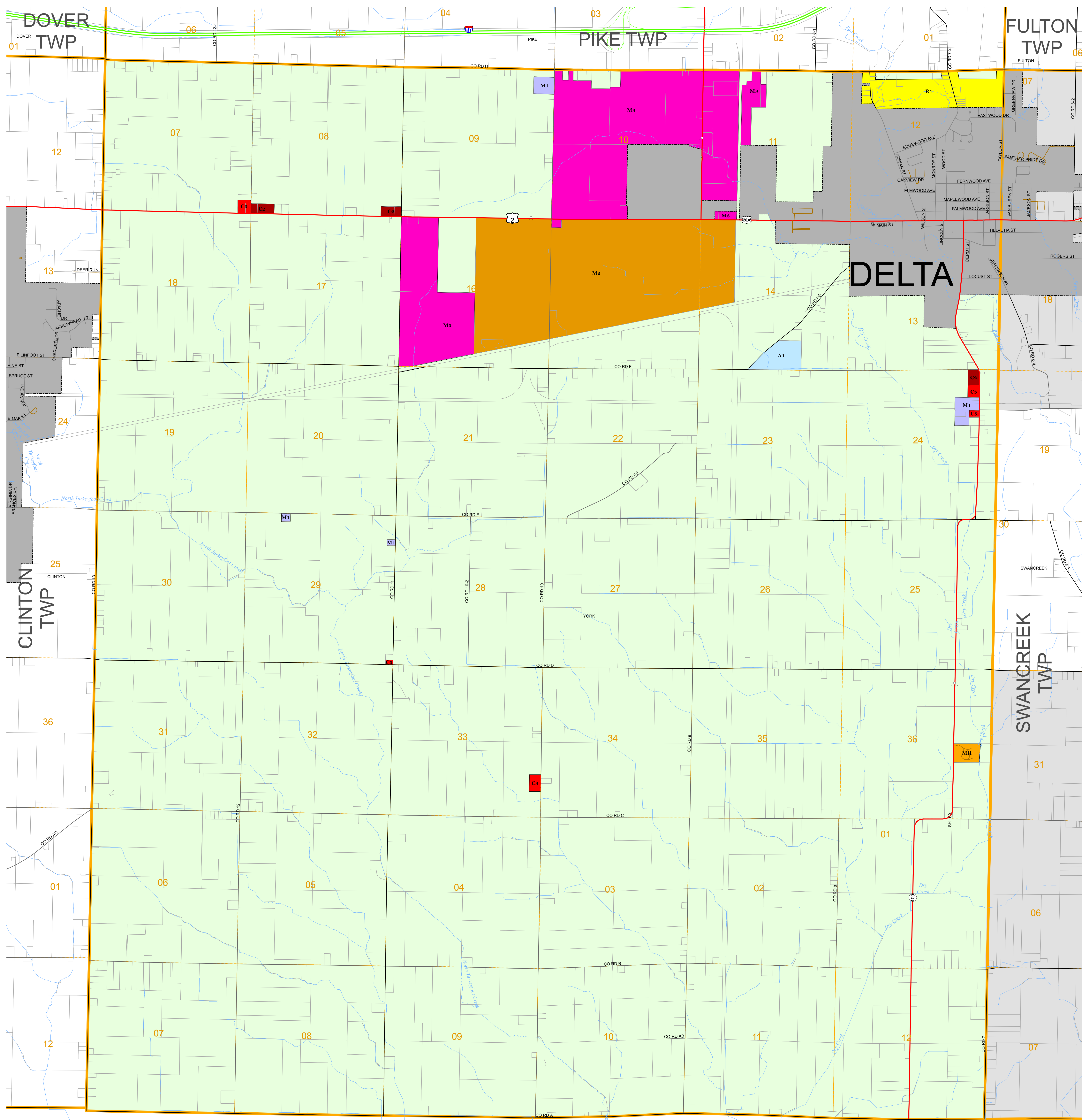
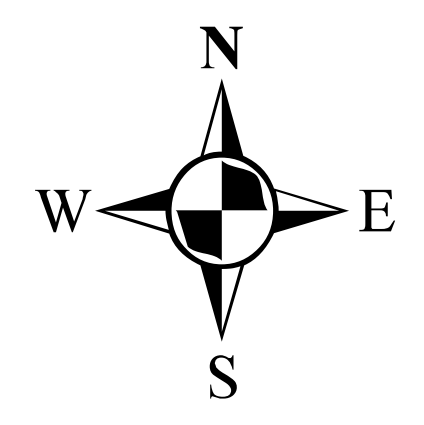
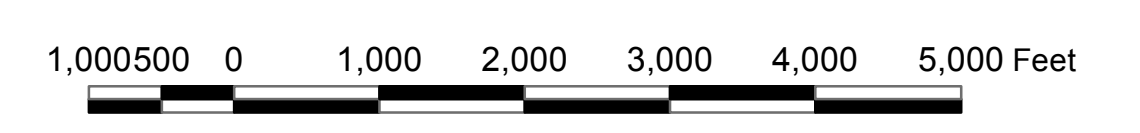


Zoning Map York Township Fulton County, Ohio



Legend

- Section Lines
- Township Boundary
- Municipal Boundary
- Parcels
- Zoning Description**
- A1 - AGRICULTURAL
- C1 - LOCAL SERVICE
- C2 - COMMERCIAL SHOPPING
- C3 - GENERAL BUSINESS
- M1 - LIGHT INDUSTRIAL
- M2 - GENERAL INDUSTRIAL
- M3 - PLANNED INDUSTRIAL
- MH - MANUFACTURED HOME
- R1 - RESIDENTIAL
- R2 - RESIDENTIAL
- R3 - RESIDENTIAL
- Unzoned Areas
- Zoned Areas



Prepared by Fulton County Regional Planning Commission (419-337-9214)
www.fultoncountyoh.com

Parcel Information Provided by Fulton County Auditor's Office (419-337-9200)

HENRY COUNTY